

FAMILY CONNECTION



INSIDE LOOK

DAP DEVELOPMENTAL
SCREENING

TESTING, SUPPORT AND
HELP FOR DEVELOPMENTAL
DELAYS

WATCH OUR PARENTING
PITFALLS WEBINAR
WITH GREAT PARENTING
TIPS AND SUPPORT

BOOKWORMS STORYTIME
ON FACEBOOK LIVE

Concerned About Your Child's Development?

Developmental Screenings Help Our Littlest Learners

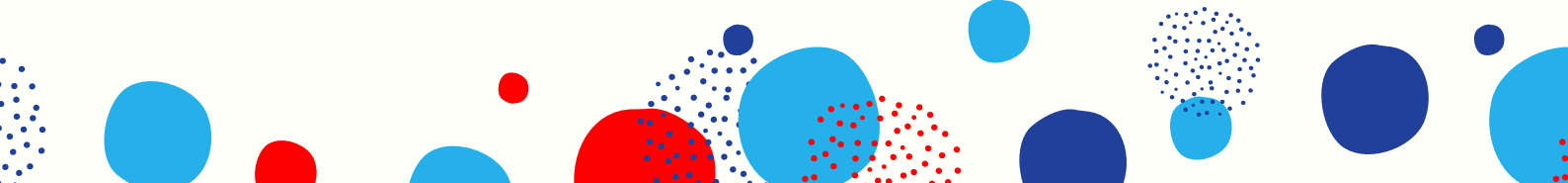




Developmental Milestones

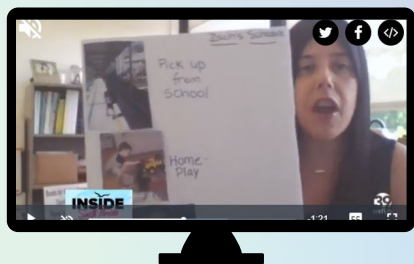
Developmental Screening and Resources for Developmental Delays

By **Allison Metsch**, Senior Director of Quality & Education, Broward ELC

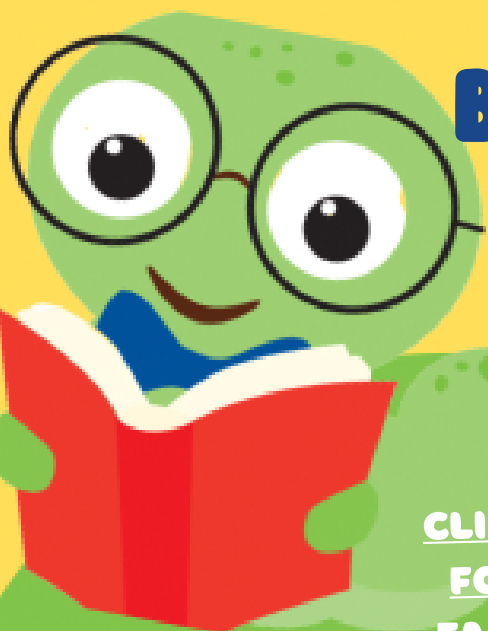
- What is developmentally appropriate for my child? Did you know that when your child does things like taking their **first steps, smiling and saying their first word**, those skills are called **developmental milestones**. We get excited and can't wait to share their progress with the world. In the first years of life, a child's development explodes in how they talk, walk, think, and play.
 - Since every child develops at their own pace and their own time, **sometimes we may notice that a skill is not developing**. Your child may walk and run but haven't started talking just yet. You may wonder why... You may wonder if it is worth mentioning to a friend or your pediatrician. You may wonder and want to ask someone that has experience in child development and is not in your family.
 - When you know what to expect from children at different ages, we can do more to support their development of new skills and to have realistic expectations for their behavior.
 - You are your child's first teacher and you know your child best so if you have a concern or a question there are things to do. For all Broward's children we have the Warm Line. The Warm Line will provide you with a warm listener that can guide you with questions about your child.
 - For families that receive School Readiness for child care, you can participate in an **Ages and Stages Questionnaire**. This is a screening and can help you determine whether or not your child is reaching their developmental milestones in the recommended time or may be a in need of extra support. Screening provides a quick snapshot of a child's health and developmental status and indicates whether further evaluation is needed.
 - Evaluation is a longer process that helps parents and schools determine whether a child has a disability. It looks at the child's strengths and needs. It may examine cognitive, academic, behavioral, physical, and other developmental factors.
 - Don't wait. Acting early can make a real difference!
 - **Contact ELC's Debbie Kay, for guidance on developmental milestones, challenging behavior, and referrals for evaluations. dkay@elcbroward.org or (954) 295-0672**
 - For more information on milestones at specific ages, please visit <https://www.cdc.gov/ncbddd/actearly/milestones/index.html>
- 

Want fun & easy tips for the family?

**Catch ELC on WSFL Channel 39
INSIDE SOUTH FLORIDA**



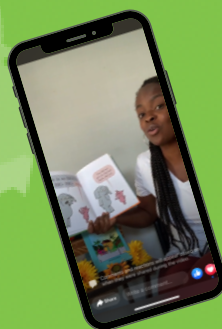
**CLICK THE
REMOTE TO
WATCH AN
EPISODE!**



BROWARD BOOKWORMS

Join us for story time on Facebook Live
Mondays, Wednesdays and Fridays
at 9:30 am

**CLICK HERE
FOR OUR
FACEBOOK
PAGE**



**ENGLISH: MONDAYS & FRIDAYS | SPANISH: WEDNESDAYS
HAITIAN CREOLE: FIRST FRIDAY OF EVERY MONTH**

CONTACT US: Main Office 954 - 377 - 2188 Weekdays 8 am - 5 pm

Live Chat 8 am - 4:30 pm Weekdays <https://www.elcbroward.org/live-chat>

www.elcbroward.org

WEBINAR



Early Learning Coalition of Broward & Broward Mom Collective Webinar

PARENTING PITFALLS

Thursday 10/14/21 - 8pm



- FIND 5 MINUTES OF PEACE
- TAKE CONTROL
- TALK TO KIDS TO ENCOURAGE COOPERATION AND LESS FUSSING

REGISTER NOW



OUR PARENTING WEBINAR LAST MONTH WAS A HUGE HIT WITH NEARLY 150 REGISTRANTS! ELC'S ALLISON METSCH & AMY PALMA JOINED BROWARD MOMS COLLECTIVE FOR PARENTING TIPS & SUPPORT.

[click here to watch](#)

Contact Us

Live Chat 8 am - 4:30 pm Weekdays
<https://www.elcbroward.org/live-chat>

Main Office (954)377-2188
Weekdays 8 am - 5 pm

www.elcbroward.org



DIVISION OF
Early Learning

LEARN EARLY. LEARN FOR LIFE.